



Adventures in handwriting

■ practice book ■

New South Wales Foundation Style



The Sun

We all need energy to carry out our daily activities. Our energy comes from the food we eat. The sun is the largest source of the Earth's energy.



Diagonal Joins to Drop-ins: Copy these joins and words relating to the sun. Remember, the join requires a pencil lift.

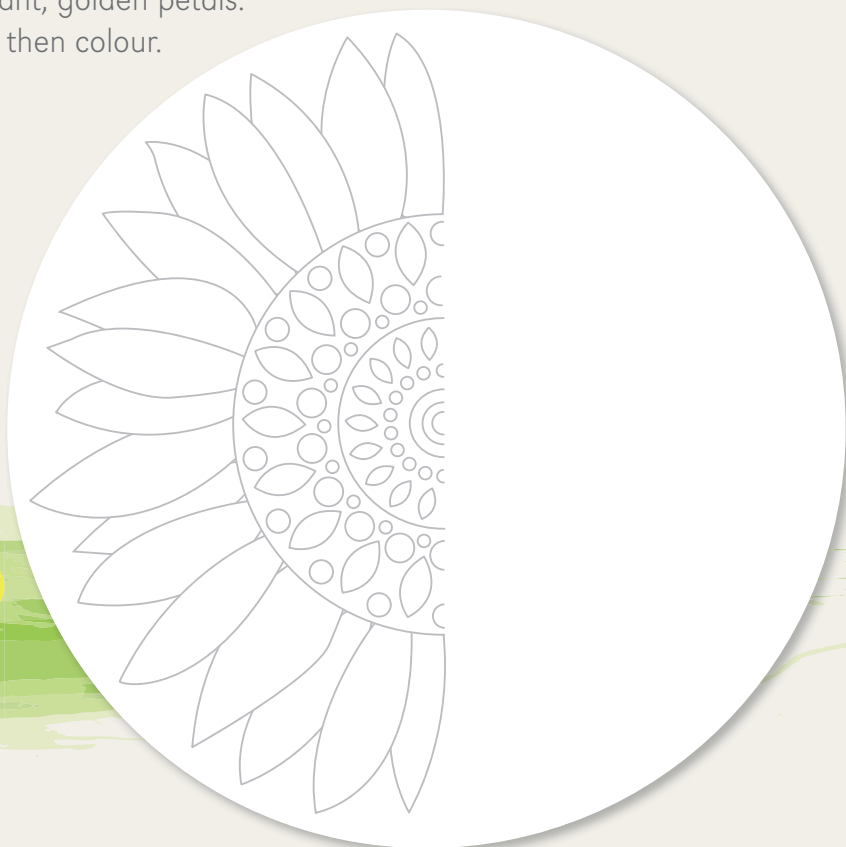
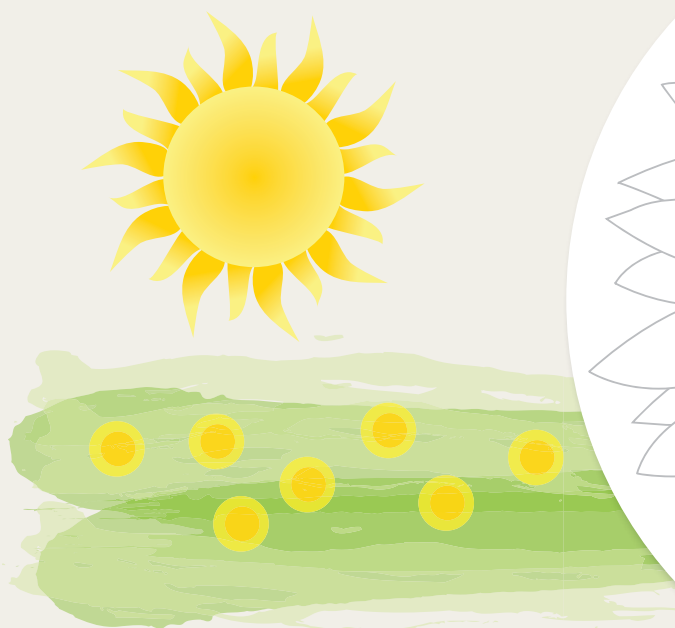
ac → a¹c → ac² → ac

a¹c a¹d a¹f a¹g a¹o a¹q c¹a c¹c c¹o d¹d d¹g e¹a e¹c e¹d e¹f e¹g h¹a

h¹o i¹a i¹c i¹d i¹f i¹o k¹a l¹a l¹f l¹o m¹a m¹o n¹a n¹o t¹a u¹d u¹f

fla¹re so¹lar hea¹t atm¹osphere ecli¹pse cor¹ona sur¹face cor¹e

Fine Motor Skills: Sunflowers have vibrant, golden petals. Complete the other half of the sunflower, then colour.



Print to Cursive: Rewrite in cursive this paragraph about the sun's energy. Focus on your joins.

The sun is at the centre of the solar system and is an amazingly

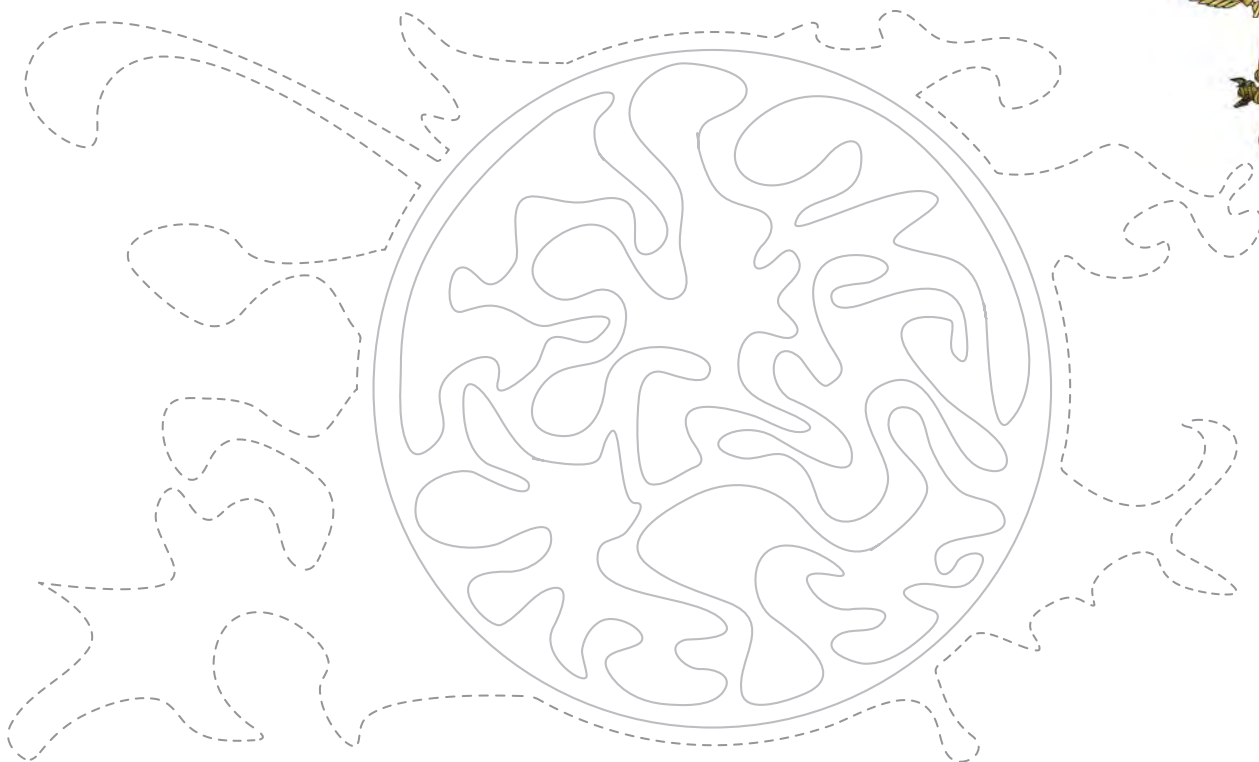
powerful source of energy. In fact, the amount of sunlight the

Earth receives in just one hour could supply all the countries on

Earth with their energy needs for a whole year!

Fine Motor Skills: Trace and colour the sun and solar flares. Use red, orange and yellow.

Solar flares are tremendous eruptions on the surface of the sun.



Printing: Unscramble these letters to find words relating to the sun and energy.
Copy each word in print, cursive and capitals.

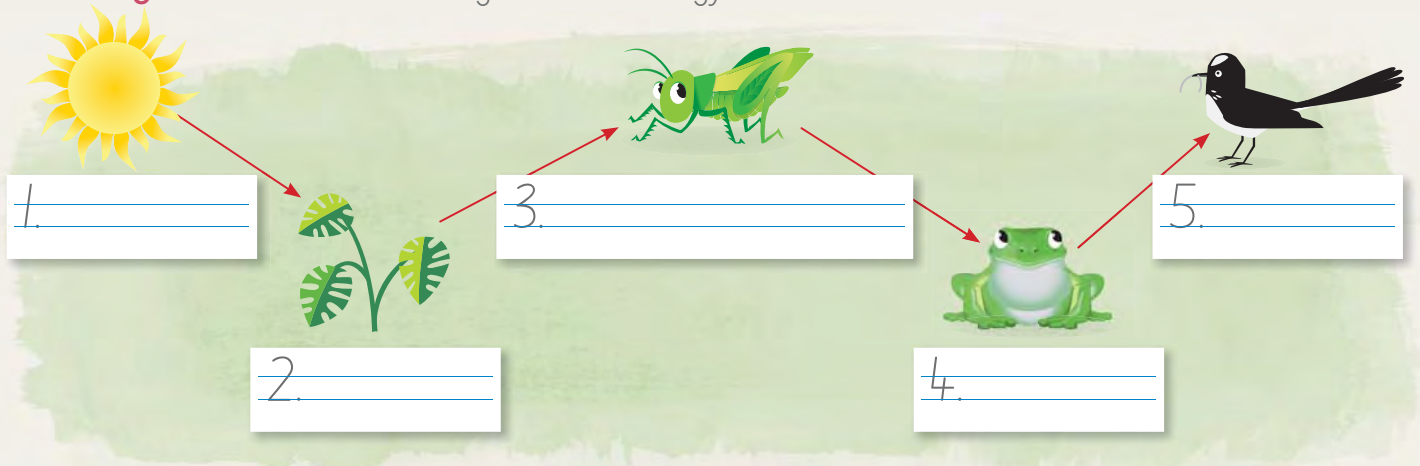
Letters	Print	Cursive	Capitals
alsor	s		
rvocnet	c		
geenry	e		
ynsun	s		
stulnigh	s		
rrnsafte	t		
woerp	p		
nubrt	b		
fraceus	s		
sayr	r		
enertage	g		
thea	h		

Copy the meaning beside each word.

- | | | |
|----------------------------------|------------------------|--------------------|
| 1. a measure of heat or cold | 4. a source of supply | 6. our star |
| 2. the ability to do work | 5. relating to the sun | 7. change or alter |
| 3. resources that do not run out | | |

Word	Meaning
energy	
solar	
convert	
renewable	
resource	
temperature	
sun	

Labelling: Print labels for this diagram of an energy chain.



Complete this passage using the words from the energy chain diagram.

Plants absorb solar energy from the _____.
 Plants convert solar energy to chemical energy.
 The _____ is eaten by the _____
 which is eaten by the _____. The frog is then eaten by
 the _____. Energy is transferred from the _____
 to the _____, to the _____, to the _____
 and then to the _____.

Copy. Focus on the diagonal joins to neckline entries.

ai am an cr dr em en ix kn lm mm mn tr um uz
 solar power energy thermal transfer immense plant tree

Reflection

Circle your best diagonal joins on this page.

Picture Mix-up

Lucy's documents have become mixed up. Help her put the image together using the numbers as a guide, then colour. Do you know what animal it is?

Answer: _____



9	14	5	10	
4	3	7	1	11
15	2	8	13	6
1	2	3	4	5
6	7	8	9	10
11	12	13	14	15